



04 About Us

06 Jewelry Series

94 Tableware Series

116 Wall Art Series

CONTENT

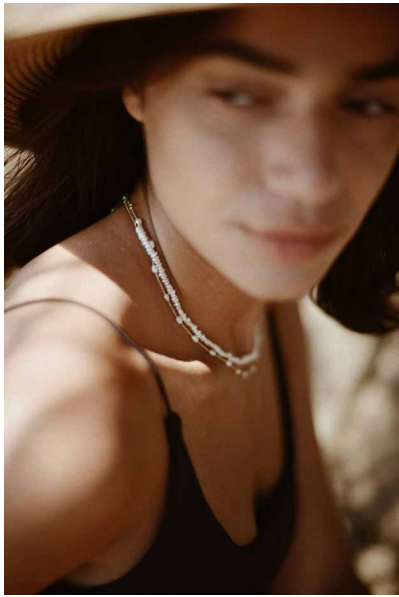
ABOUT US

It all began with a grain of rice. YILI Design Studio originated from Norway. We firmly believe that each rice grain is simple yet unique, just like our ordinary every day. YILI is devoted to excavating the beauties in the ordinary things, and through minimalistic, low-key, and warm design creativity, transform the forgotten in the plainsight into love and connection in the being. Starting from grain rice, let's experience the aesthetics.

STILL SUMMER

The Attitude of Rice

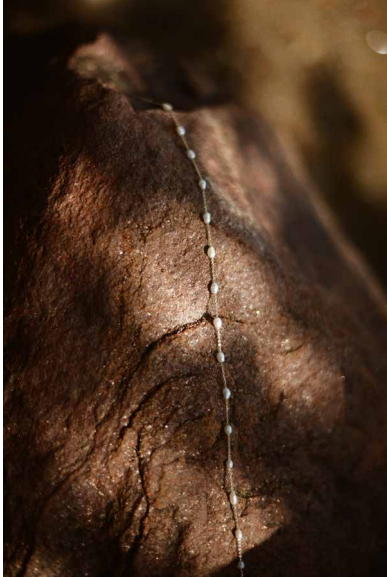






Inspired by the unique and pure rice grains, STILL SUMMER is a collection with strands of delicate, unevenly rice-shaped freshwater pearls that bring you back to a bright and refreshing summer whenever and wherever.





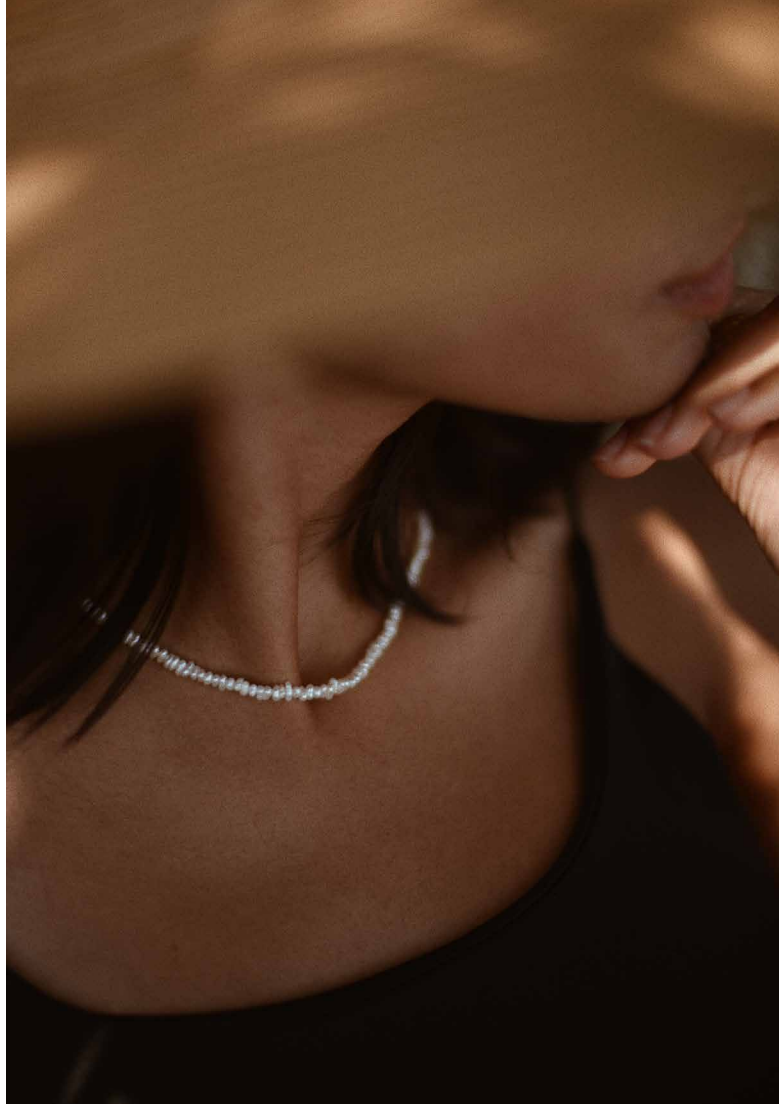
JE2211

STILL SUMMER

- Pearl sprinkle necklace

- Length 44 cm
- Rice-shaped freshwater pearl
- 14-karat yellow gold vermeil plated
- Handcrafted in sterling silver
- Lobster clip fastening
- Fully adjustable to your taste*

*Simply by pulling the end of the chain while you're holding the round ball until reaching your desired length. Perfect as a gift too when you are not sure about the length.





JE2210

STILL SUMMER

- Beaded pearl necklace

- Length 42 cm
- Flat-shaped freshwater pearl
- 14-karat yellow gold vermeil plated
- Handcrafted in sterling silver
- Lobster clip fastening
- Fully adjustable to your taste*

*Simply by pulling the end of the chain while you're holding the round ball until reaching your desired length. Perfect as a gift too when you are not sure about the length.







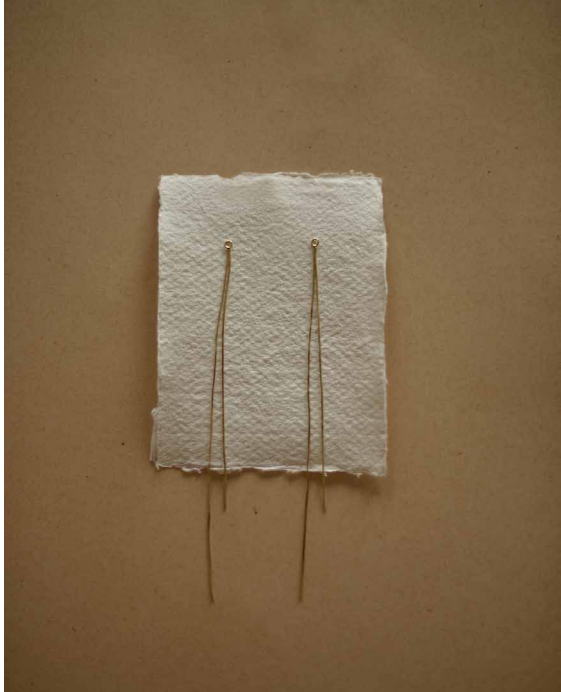
JE2212

STILL SUMMER

- Pearl drop earring

- Length Small: 22mm
Medium: 35mm
Large: 60mm
- Rice-shaped freshwater pearl
- 14-karat yellow gold vermeil plated
- Handcrafted in sterling silver





JE2213

RICE TASSEL

- drop earring

- Length 125mm
- 14-karat yellow gold vermeil plated
- Handcrafted in sterling silver
- Can wear in front or behind the ear

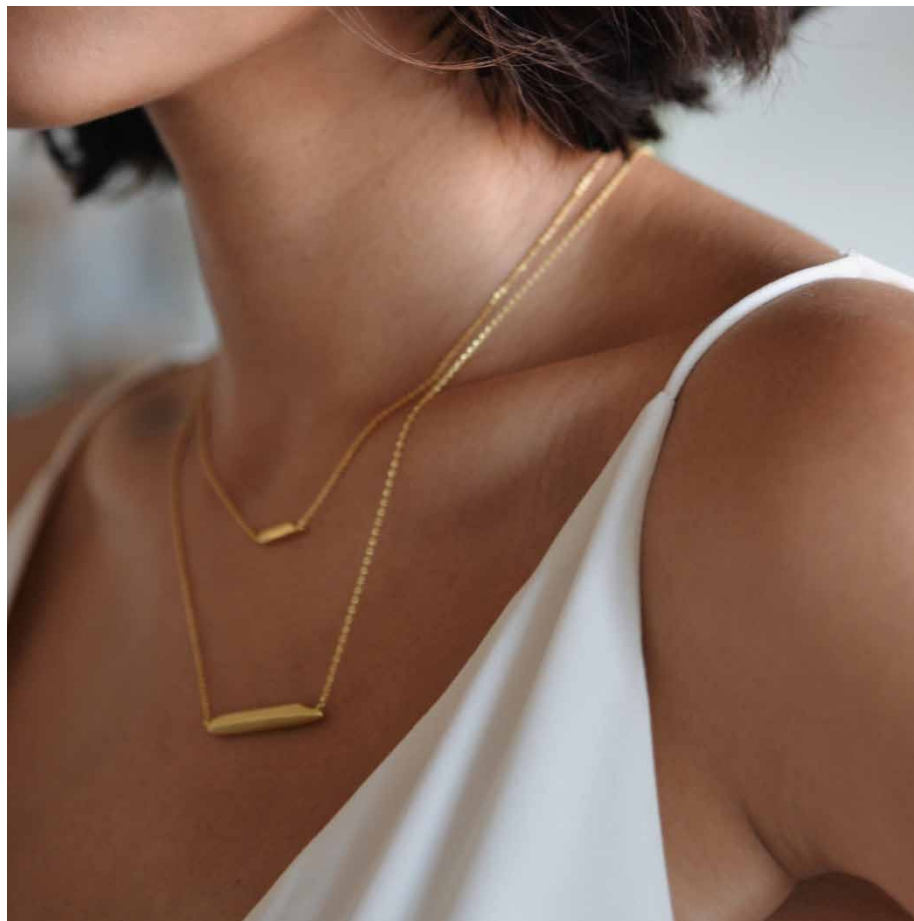




EDGE COLLECTION

The Attitude of Rice

Inspired by the shape of long-grain rice,
Edge is a tribute to those who dare to step
outside routine to discover new horizons.





EDGE - STUD EARRINGS

- Stud Earrings
- 14-karat yellow gold vermeil plated
- 100% silver, nickel free
- Length of the rice: 20mm



JE2106



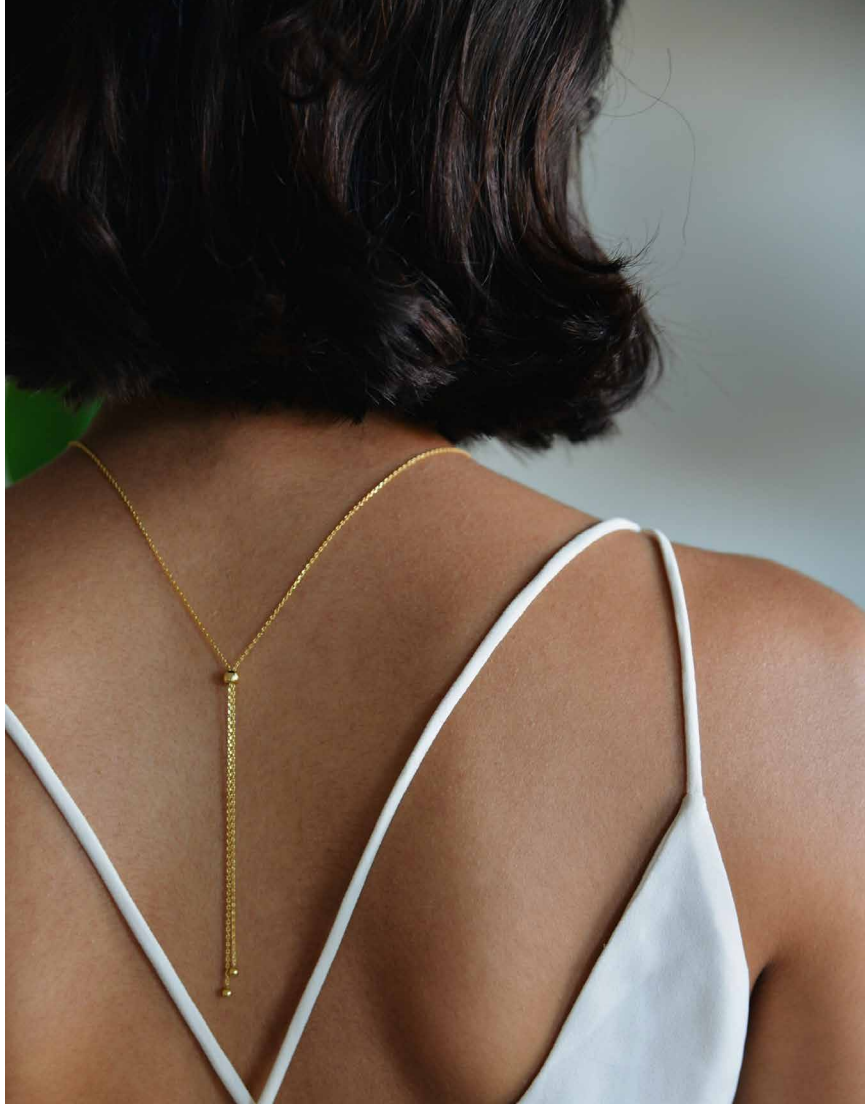


JE2109

EDGE - BRACELET

- 14-karat yellow gold vermeil plated
- 100% sterling silver, nickel free
- Lobster clip fastening
- Length of the rice: 15mm
- Fully adjustable to your taste*

*Simply by pulling the end of the chain while you're holding the round ball until reaching your desired length. Perfect as a gift too when you are not sure about the length.





JE2107

EDGE - PENDANT NECKLACE LARGE

- Pendant necklace
- 14-karat yellow gold vermeil plated
- 100% sterling brass, nickel free
- Lobster clip fastening
- Length of the rice: 32mm
- Fully adjustable to your taste*

*Simply by pulling the two smaller balls at the end of the chain while you're holding the big round ball until reaching your desired length. Perfect as a gift too when you are not sure about the length.



EDGE pendant comes in two sizes, you can pair them together or wear separately, even layering with PUFFY pendant to make you look truly unique.





JE2108



EDGE - PENDANT NECKLACE SMALL

Shiny / Matte finish

- Pendant necklace
- 18-karat yellow gold plated
- 100% sterling silver, nickel free
- Lobster clip fastening
- Length of the rice: 15mm
- Fully adjustable to your taste





PUFFY COLLECTION

The Attitude of Rice

The clear luster of rice, reflects the ordinary every day. Stepping outside complicated life, rice embodies simplicity and purity. From a Norwegian design brand, YILI's "**Attitude of Rice**" jewelry series presenting transcendental daily aesthetics to you.

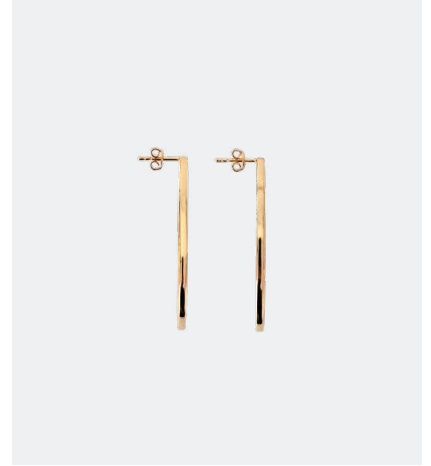


When malleability meets lines,
together they delineates simplicity and refinement.



LINE - STUD EARRINGS

- Stud Earrings
- 14-karat yellow gold vermeil plated
- 100% Brass or silver, nickel free
- Dimension: 45mm x 90mm
- Thickness: 2mm



JE2001



Quietly relying on each other thus exuding
a slender and swaying beauty.



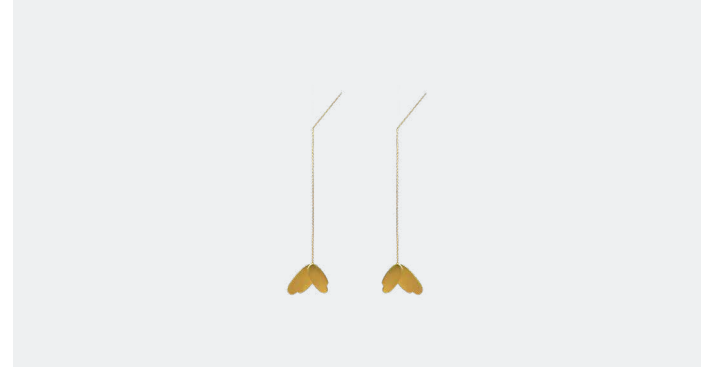
A close-up profile of a woman's face, looking down with her eyes closed. She has dark, wavy hair and is wearing a light-colored, textured sweater. A gold chain earring with a yellow, leaf-shaped pendant is visible on her left ear. The background is a soft, out-of-focus light color.

OUR PHILOSOPHY:
TO BE HUMBLE,
SIMPLE AND GRATEFUL.



JE2002

LEAN - DROP EARRINGS



- Dangle earrings
- 14-karat yellow gold vermeil plated
- 100% Brass or silver, nickel free
- Length 125mm (incl. end stick 25mm)
- Easily adjustable to reach your desired length





After cooking,
Rice grains are round and full.
Similarly,
We grow.

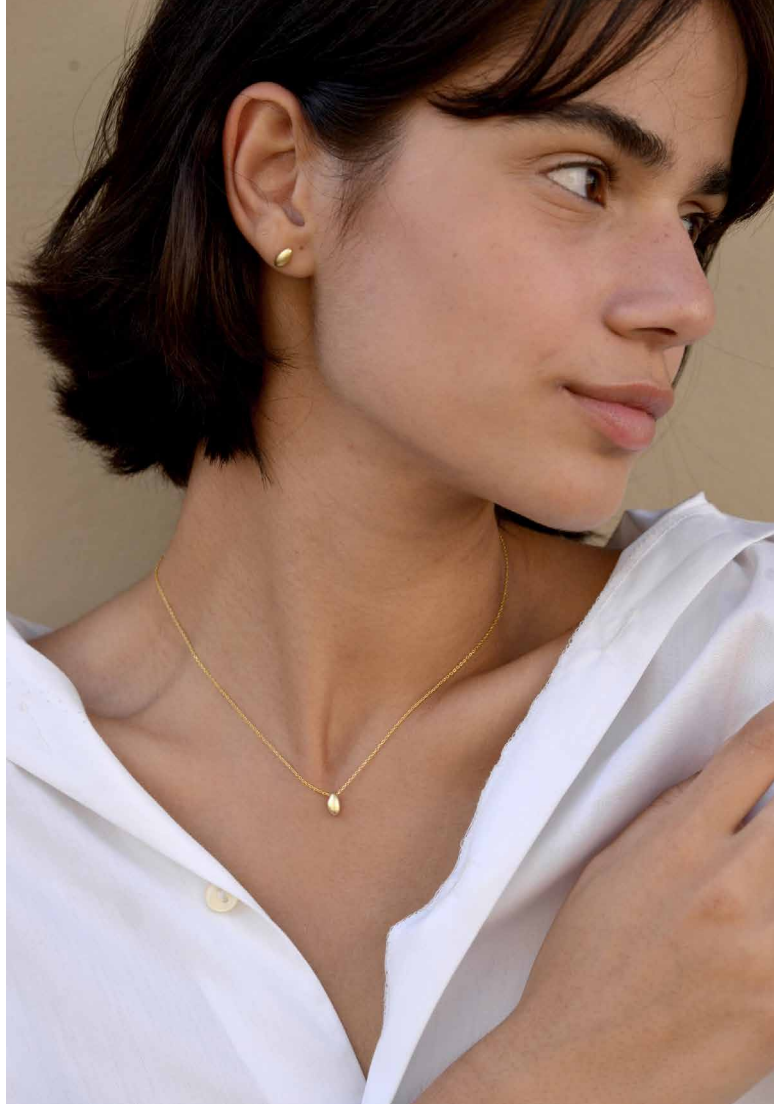


JE2003

PUFFY - PENDANT NECKLACE

- Pendant necklace
- 14-karat yellow gold vermeil plated
- 100% sterling silver, nickel free
- Lobster clip fastening
- Dimension of the rice: 8mm x 4.5mm x 3.6mm
- Fully adjustable to your taste*

*Simply by pulling the end of the chain while you're holding the round ball until reaching your desired length. Perfect as a gift too when you are not sure about the length.

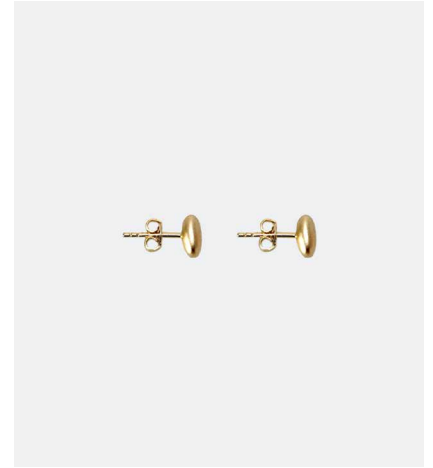
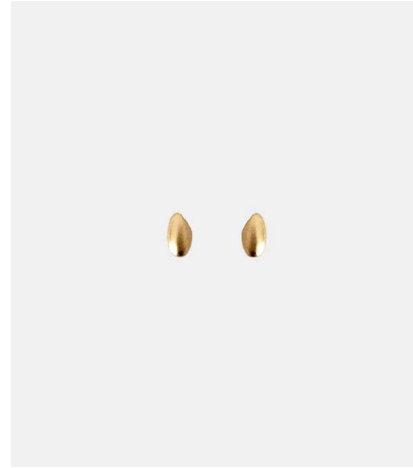




Can pull off any day with a minimalistic clean look and in a harmonious match with anything you have in store.

PUFFY - STUD EARRINGS

- Stud Earrings
- 14-karat yellow gold vermeil plated
- 100% silver, nickel free
- Dimension of the rice: 8mm x 4.5mm x 3.6mm



JE2004





Quite lean and slender, simple yet filled with exuberant vibrance, adding some fun and swing to the ordinary everyday.



JE2005

PUFFY - DROP EARRINGS

- Dangle earrings
- 14-karat yellow gold vermeil plated
- 100% silver, nickel free
- Length 95mm (incl. end stick 30mm)
- Easily adjustable to reach your desired length



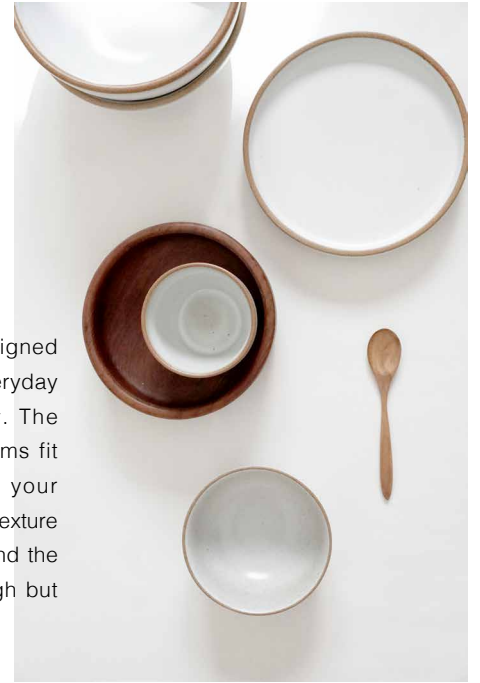


TABLEWARE SERIES

KAO RO



KAO RO is designed for enjoying everyday meals casually. The soft curving forms fit comfortably in your hands, and the texture of the clay around the rim adds a rough but sleek touch.



Made by hand,
oriental craftsmanship with a nordic touch.











TW1901

KAO RO - MUG

300ML

- Material: Kaolin clay with matte white glaze
- Dimension: Ø90mm H=65mm



TW1902

KAO RO - PLATE

- Material: Kaolin clay with matte white glaze
- Dimension: Ø190mm H=30mm







TW2001

KAO RO SAND - LARGE

- Material: Kaolin clay unglaze
- Dimension: Ø190mm H=30mm



TW2002

KAO RO SAND - SMALL

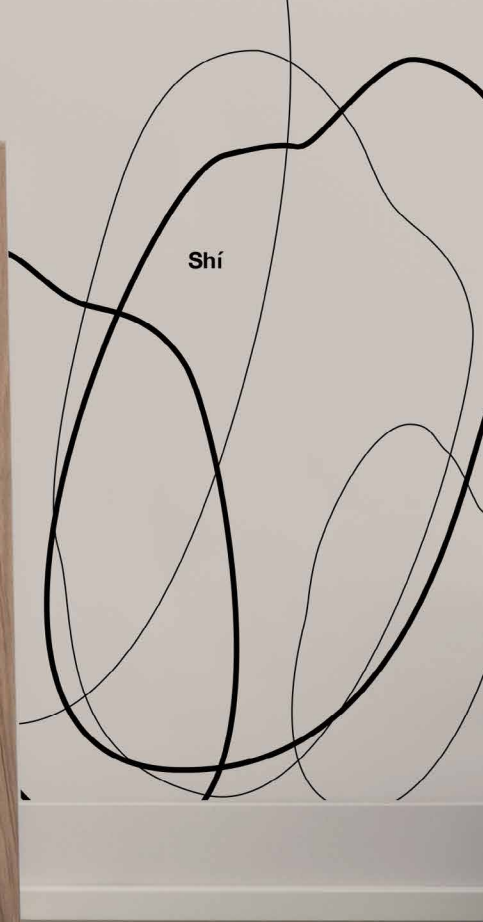
- Material: Kaolin clay unglaze
- Dimension: Ø150mm H=25mm





WALL ART SERIES

Shí





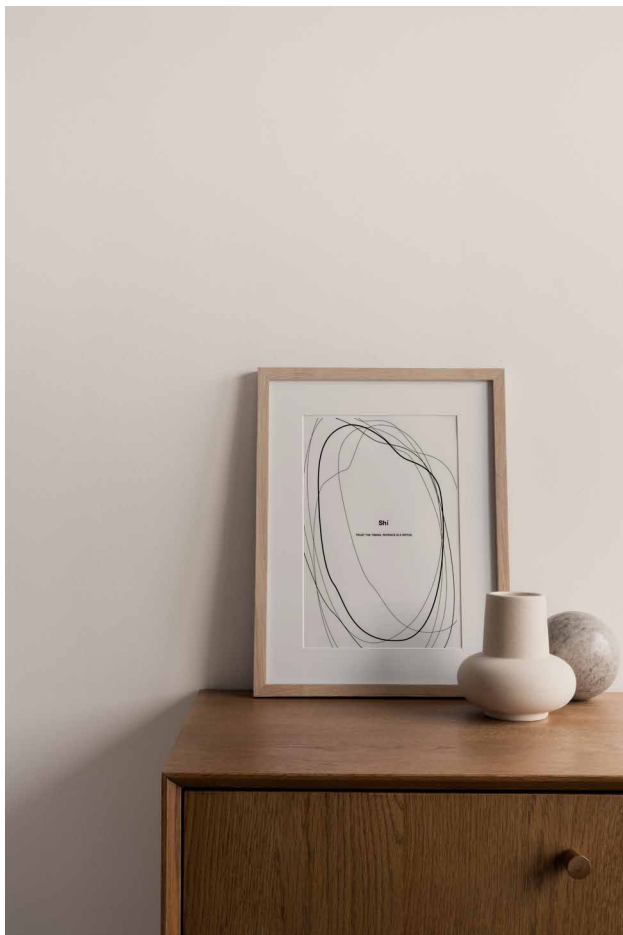
HOW TO COOK PERFECT RICE EVERY TIME?

Tip1: rinse your rice

Tip2: add a pinch of salt to season the rice

Tip3: steam for 5-10 additional minutes





Shí 食

(v.) With the second tone in Chinese means "to eat". We'd like to present the ordinary everyday food by drawing the shape with the simple and seamless lines.

"Trust the timing. Patience is a virtue.", our wall art brings the simple tip of rice cooking, but also life philosophy.



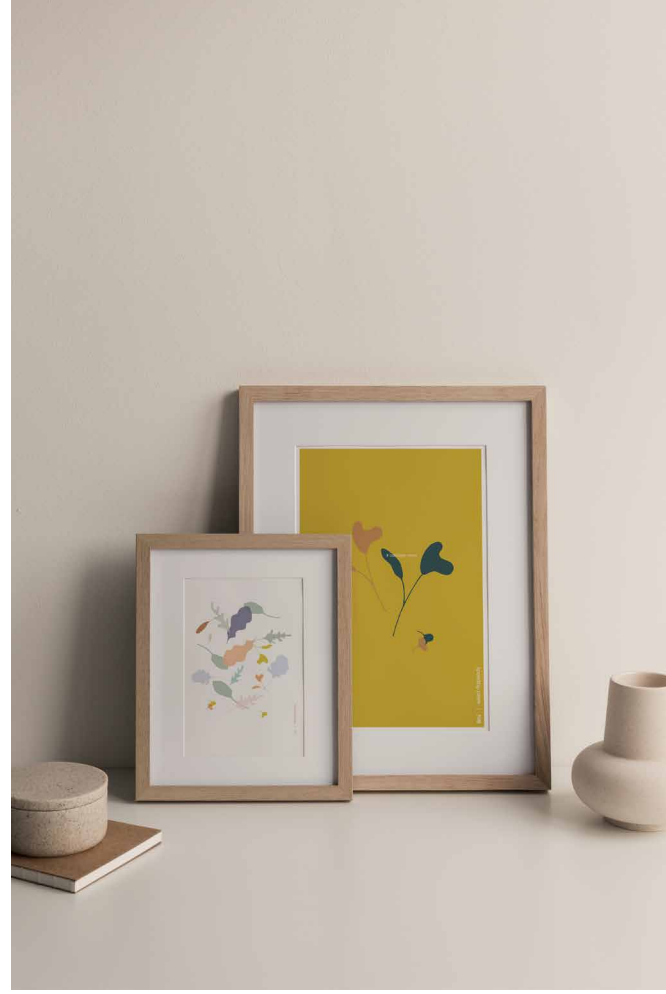
Shí | salad rhapsody

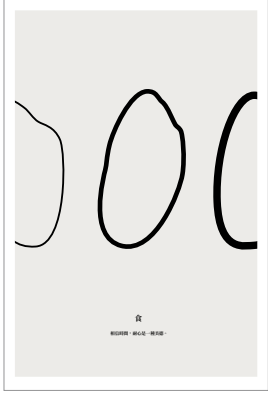




In the ordinary everyday, something is extraordinary.

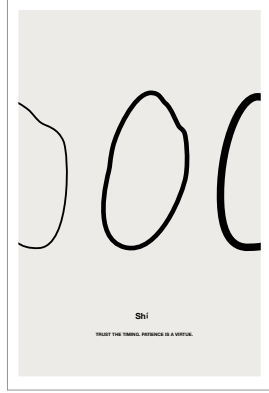






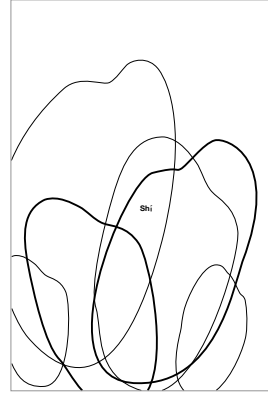
Rice (Chinese version)

WA1901-A



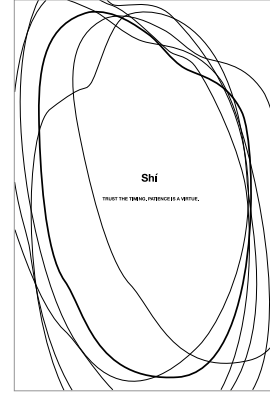
Rice (English version)

WA1901-B



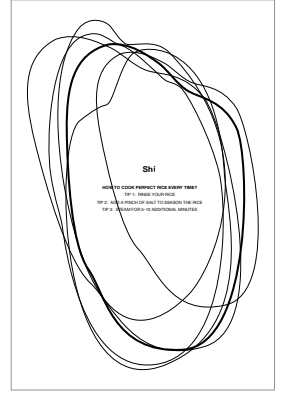
Boiling Rice

WA1902



Trust the Timing

WA1903-A



Rice-cooking Tips

WA1903-B

Shí | attitude of rice - WALL ART

- Material: Lightly hammer-embossed Conqueror paper

- Dimension: 30*40cm



Salad Rhapsody(dark green)
WA1904-A



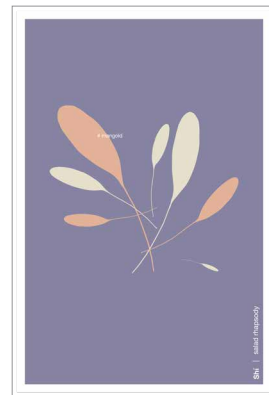
Salad Rhapsody(white)
WA1904-B



Duo Dance
WA1905



The Choir
WA1906



Big Beat
WA1907

Shí | salad rhapsody - WALL ART

- Material: Lightly hammer-embossed Conqueror paper
- Dimension: 30*40cm

E-mail: Hey@yilidesign.no

Instagram: [yilidesign](https://www.instagram.com/yilidesign)

Facebook: [yilidesign](https://www.facebook.com/yilidesign)

Website: www.yilidesign.no

